

Cosmic Calendar

Known as the Cosmic Calendar, this calendar will represent the universe in its 13.8 billion years of existence with 437.5 years per second, 1.575 million years per hour and 37.8 million years per day.

As part of this activity, why don't you take a guess when the events on the next page happened and then we will show you exactly when these events occurred on the timeline of the universe.



Big Bang



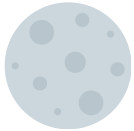
First Galaxies



Milky Way is Formed



Solar System is Formed



Moon is Formed



First Life



Oxygenation



Complex Cells



Simple Life



Insect Ancestors



Fish



First Plants



Seeds



Reptiles



Dinosaurs



Avian Dinosaurs



Flowers



Dinosaur Extinction



Apes



Primitive Humans



Domestication of Fire



Modern Human



Last Ice Age



Farming



Newgrange



Stonehenge



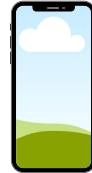
Alphabet



Iron Age



Renaissance



Modern Era



Big Bang



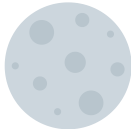
First Galaxies



Milky Way is Formed



Solar System is Formed



Moon is Formed



First Life



Oxygenation



Complex Cells



Simple Life



Insect Ancestors



Fish



First Plants



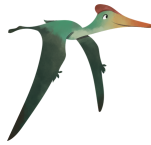
Seeds



Reptiles



Dinosaurs



Avian Dinosaurs



Flowers



Dinosaur Extinction



Apes



Primitive Humans



Domestication of Fire



Modern Human



Last Ice Age



Farming



Newgrange



Stonehenge



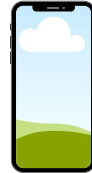
Alphabet



Iron Age



Renaissance



Modern Era

JANUARY

MON	TUE	WED	THUR	FRI	SAT	SUN
				1	2	3
4	5	6	7	8	9	10
11	12	13	14	15	16	17
18	19	20	21	22	23	24
25	26	27	28	29	30	31

FEBRUARY

MON	TUE	WED	THUR	FRI	SAT	SUN
1	2	3	4	5	6	7
8	9	10	11	12	13	14
15	16	17	18	19	20	21
22	23	24	25	26	27	28

MARCH

MON	TUE	WED	THUR	FRI	SAT	SUN
1	2	3	4	5	6	7
8	9	10	11	12	13	14
15	16	17	18	19	20	21
22	23	24	25	26	27	28
29	30	31				

APRIL

MON	TUE	WED	THUR	FRI	SAT	SUN
			1	2	3	4
5	6	7	8	9	10	11
12	13	14	15	16	17	18
19	20	21	22	23	24	25
26	27	28	29	30		

MAY

MON	TUE	WED	THUR	FRI	SAT	SUN
					1	2
3	4	5	6	7	8	9
10	11	12	13	14	15	16
17	18	19	20	21	22	23
24	25	26	27	28	29	30
31						

JUNE

MON	TUE	WED	THUR	FRI	SAT	SUN
	1	2	3	4	5	6
7	8	9	10	11	12	13
14	15	16	17	18	19	20
21	22	23	24	25	26	27
28	29	30				

JULY

MON	TUE	WED	THUR	FRI	SAT	SUN
			1	2	3	4
5	6	7	8	9	10	11
12	13	14	15	16	17	18
19	20	21	22	23	24	25
26	27	28	29	30	31	

AUGUST

MON	TUE	WED	THUR	FRI	SAT	SUN
						1
2	3	4	5	6	7	8
9	10	11	12	13	14	15
16	17	18	19	20	21	22
23	24	25	26	27	28	29
30	31					

SEPTEMBER

MON	TUE	WED	THUR	FRI	SAT	SUN
		1	2	3	4	5
6	7	8	9	10	11	12
13	14	15	16	17	18	19
20	21	22	23	24	25	26
27	28	29	30			

OCTOBER

MON	TUE	WED	THUR	FRI	SAT	SUN
				1	2	3
4	5	6	7	8	9	10
11	12	13	14	15	16	17
18	19	20	21	22	23	24
25	26	27	28	29	30	31

NOVEMBER

MON	TUE	WED	THUR	FRI	SAT	SUN
1	2	3	4	5	6	7
8	9	10	11	12	13	14
15	16	17	18	19	20	21
22	23	24	25	26	27	28
29	30					

DECEMBER

MON	TUE	WED	THUR	FRI	SAT	SUN
		1	2	3	4	5
6	7	8	9	10	11	12
13	14	15	16	17	18	19
20	21	22	23	24	25	26
27	28	29	30	31		

DECEMBER

31	
00:01	
03:00	
07:00	
10:00	
13:00	
16:00	
19:00	
21:00	
22:00	
23:00	

DECEMBER

31

23:59:00

23:59:10

23:59:20

23:59:30

23:59:40

23:59:50

What About You?

If we know it's 437.5 years per second on the cosmic calendar, how much of that last cosmic second have you existed for?

$\text{Your Age} / 437.5 = \text{The fraction of that last cosmic second that you have been here for.}$

It's very small compared to the 13.8 billion years the universe has existed!